



# Dam Report

Generated by GeoWing Dam Builder

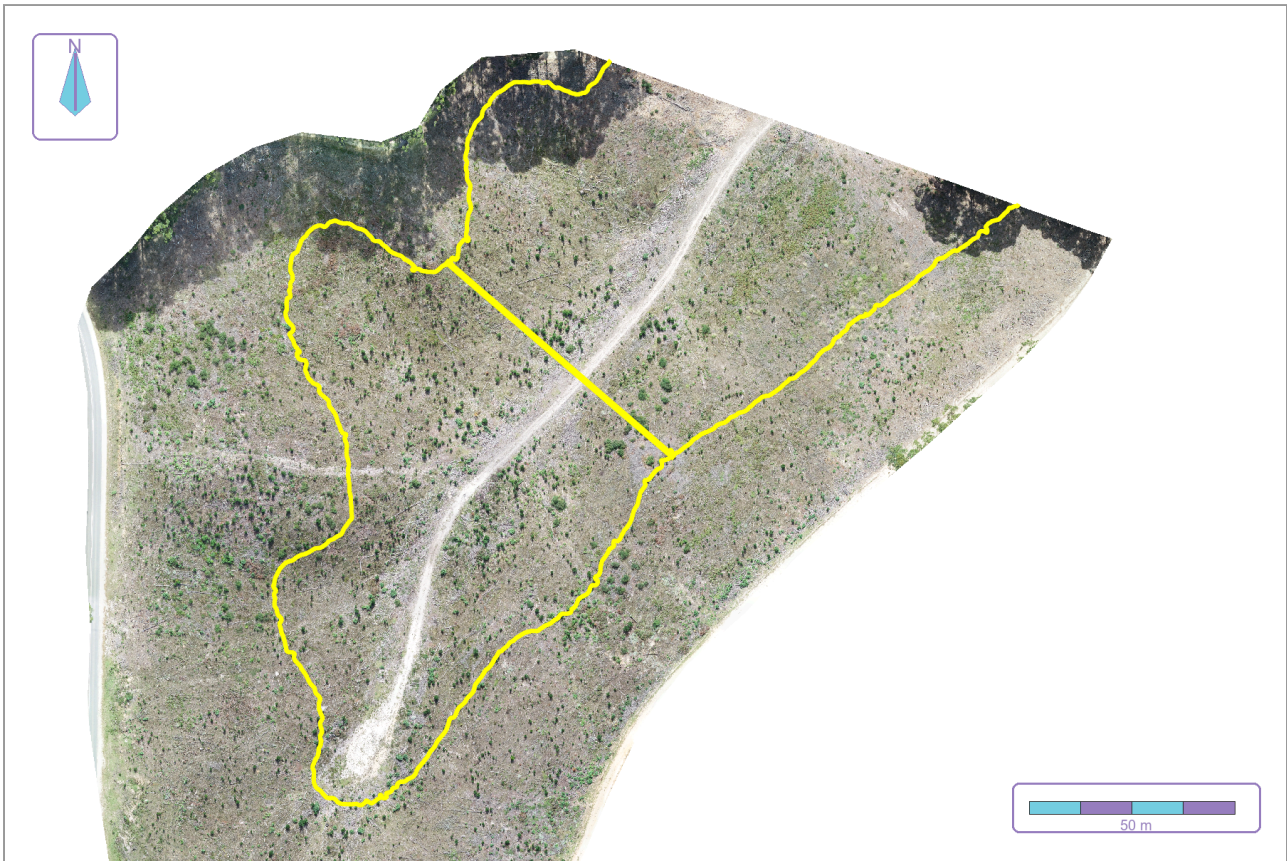
Native data units: m, m<sup>2</sup>, m<sup>3</sup>

Report generated 2026-04-02

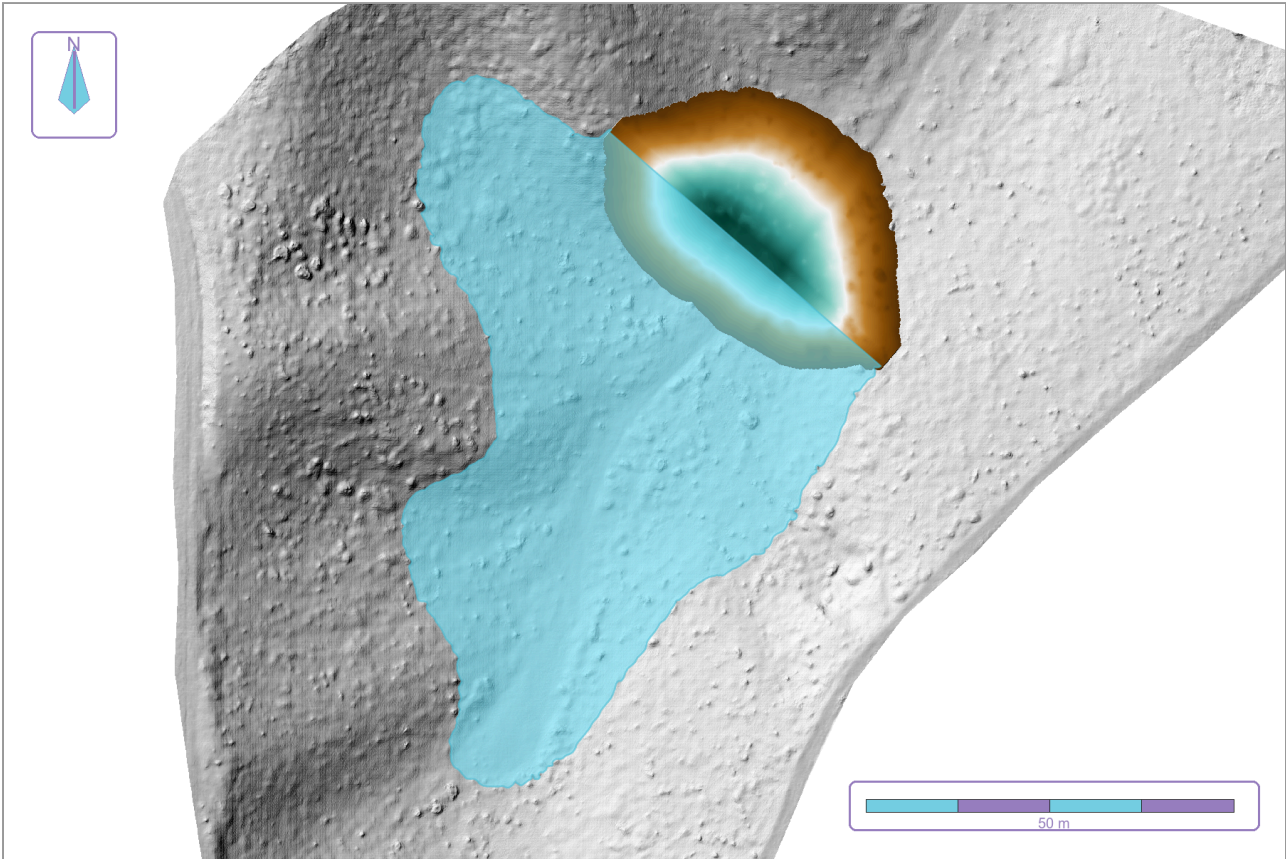
## Run summary

Metric	Value
output_prefix	dam_run
upstream_mode_requested	Auto
upstream_side_used	Left
flood_el (m)	249.25
crest_el (m)	250.25

## Dam layout and flood extent (plan view)



## Dam wall geometry and water retention (terrain view)



## Dam water/ flood metrics

Metric	Value
flood_el (m)	249.25
crest_el (m)	250.25
poly_area (m <sup>2</sup> )	16614.557801
wet_area (m <sup>2</sup> )	16608.741861
water_vol (m <sup>3</sup> )	84363.627264
avg_d (m)	5.079471
max_d (m)	11.970001

## Dam wall metrics

Metric	Value
wall_vol_xs (m <sup>3</sup> )	29856.764873
wall_vol_avg (m <sup>3</sup> )	25389.25959
wall_vol_ras (m <sup>3</sup> )	29686.824219
fill_vol (m <sup>3</sup> )	29686.824219
fill_area (m <sup>2</sup> )	5556.149398
keycut_m3 (m <sup>3</sup> )	322.189209
totcut_m3 (m <sup>3</sup> )	322.189209
net_m3 (m <sup>3</sup> )	29364.63501
max_h (m)	13.149994
mean_h (m)	8.55026
mean_usr (m)	28.988769
mean_dsr (m)	18.311424
pct_avg (%)	-14.963126
pct_rast (%)	-0.569186

This report is a preliminary terrain-driven assessment and is not a signed engineering design.